



SALLI Saddle Chair

"Only for the smart people !"

- You'll look better
- You'll be healthier
- You'll accomplish more
- Working is more comfortable

SIT HAPPY

SALLI® Saddle Chair - No. 1 in Quality

- > Original Finnish high-quality product
- > Unique, patented design
- > Comfortable and healthy divided seat
- > Different models for various purposes
- > Wide variety of accessories
- > Durable metal base, 10 year guarantee
- > Leading know-how and customer support

www.salli.com



Benefits of SALLI furniture:

- + Knees straighten – lesser risk of arthrosis
- + Shoulders relax – muscle tensions decrease
- + Blood circulation improves – legs feel better
- + Salli moves around easily – rolling and reaching is effortless
- + Posture improves – lower back strengthens and becomes healthier
- + Breathing deepens – oxygen levels are boosted, you'll feel more active
- + Gap in the seat reduces pressure when sitting – improved genital health



Divided seat of a Salli MultiAdjuster, adjustable seat width and inclination.

Examples of the products:



Salli MultiAdjuster



Salli Twin



Salli Classic



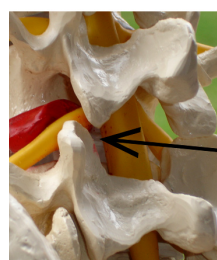
Salli Big Elbow Table



Salli Compact



Healthy Salli seat – supportive vertebra angle.



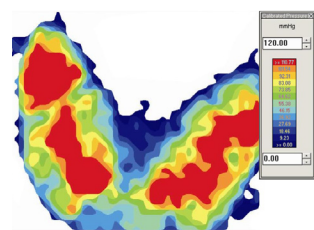
Defective vertebra angle – traditional seat.



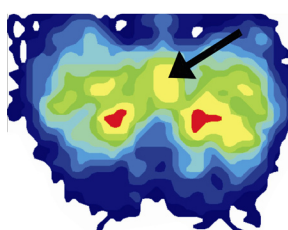
Research results on seat pressure

When you sit on a traditional work seat, pressure is concentrated on the buttock and thigh muscles and also in part on the genitalia. Solid saddle seat applies harmful pressure on the male genitals. On the divided saddle seat the pressure is concentrated on the sitting bones, which is the healthiest alternative for anyone who sits a lot.

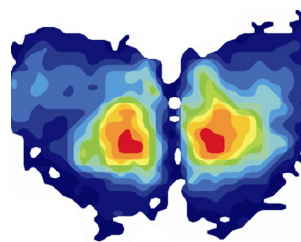
Measurements were made with a Tekscan pressure mat.



Traditional work seat: pressure mainly on the thigh and buttock muscles.



Solid saddle seat: strong pressure on the male genitals.



Divided saddle seat: pressure correctly on the sitting bones.



Workstation affects your well-being as a whole

The seat's effect on your well-being at work is approximately one half, electronically height adjustable table's effect is about a third and the effect of the elbow supports is also notable.

When using a Salli Saddle chair, the worktop has to be higher than normally. The best solutions for this are Salli's own electronically height adjustable tables (Comfort, Compact or Manager), whereas the leather upholstered elbow support (Nipsu or Trapp Nipsu) secures an ideal support for elbows, wrists and mouse hand.

S
A
L
L
I

S
Y
S
T
E
M
S

The Original
Salli
System

Manufacturer:
Salli Systems
Finland

Contact:
Tel. +358 10 270 1210
info@salli.com
www.salli.com